



**Head Office**  
3900 101 Street NW  
Edmonton, Alberta  
T6E 0A5  
Ph: 780.437.3055  
Fax: 780.436.5461

**Calgary Office**  
3516 114 Avenue SE  
Calgary, Alberta  
T2Z 3V6  
Ph: 403.250.1416  
Fax: 403.291.9487

## **CVS V308 Isolation Valve**

### **2 Inch NPT 3000 PSI**

The CVS Series V308 Isolation Valve is a quarter turn fully open or fully closed valve suitable for use to stop the flow of gas, liquid, slurry or powder.

Typically operated in the fully open or fully closed positions to protect in an emergency, or provide shutoff protection for safe maintenance



#### **Features:**

##### **CRN OC17433.2**

Compliant with ASME B16.34 and NACE MRO175

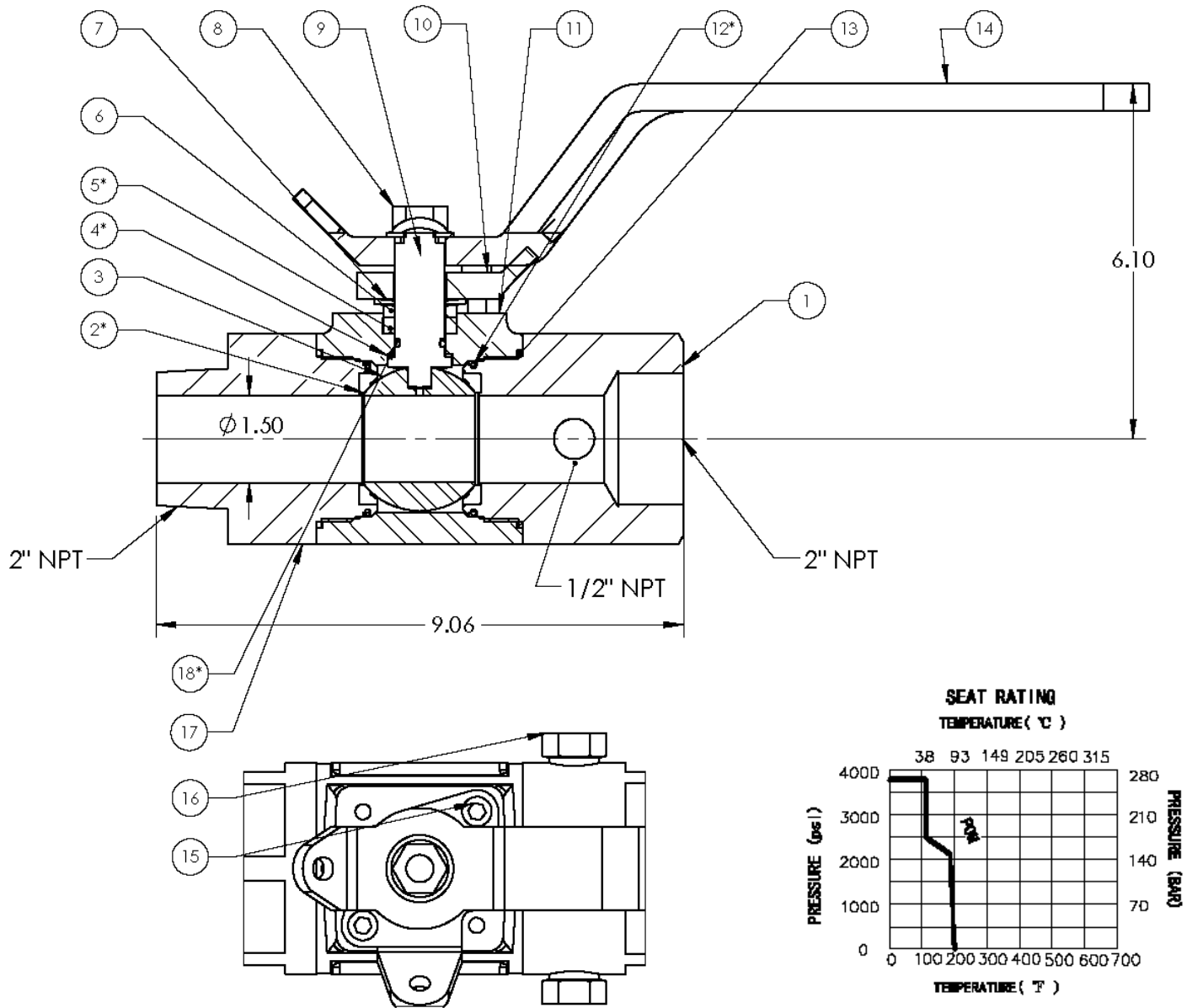
Inspected and tested to API 598

End to End connections comply to manufacturing standards

Threaded Ends - ASME B1.20 NPT

-50°F to 250°F (-46°C to 121°C)

## CVS 2 Inch 3000 V308 Isolation Valve – Assembly Dimensions



Item	Description	Material	Item	Description	Material
1	Cap 1	A350 LF2 Class 1	10	Lockhole Flange	WCB
2	Seat	Delrin	11	Body	A350 LF2 Class 1
3	Ball	316 SST Chrome Coated	12	O-Ring	Viton GLT
4	Thrust Washer	Delrin	13	Washer	RTFE
5	Packing	RTFE (15% GFT)	14	Handle	WCB
6	Gland	316 SST	15	Screw	410 HT
7	Bevel Washer	304 SST	16	Plug	A350 LF2 Class 1
8	Nut	A2-70/CS+Zn	17	Cap 2	A350 LF2 Class 1
9	Stem	17-4ph	18	O-Ring	Viton GLT