

OPERATION

The CVS 4057 3-Way Valves utilize a modular design and incorporate a sliding spool in order to control flow. The CVS 4057 standard sliding spool features a small center dead band position which allows no simultaneous valve port flow.

With the spool in the unlatched (rest position) as shown in the diagrams, Port 2 is open to Port 3 and Port 1 is closed. With the spool in the latched (actuated position), Port 2 is open to Port 1, and Port 3 is closed.

CVS offers three types of 4057 3-way valves:

CG: Pressure operated spring return

CP: Manual latch or pressure operated with spring return

CE: Manual or Pressure Operated Spring Return

CVS Series 4057 3-Way Valve



CVS CE



CVS CG



CVS CP

SPECIFICATIONS

Body Material: Precision cast aluminum

Standard Spool Material: Aluminum

Standard Seal Material: Buna

Maximum Temperature:

- 40°C ~ 120°C (- 40°F ~ 250°F)

Flow Coefficient (equivalent to 9/32 dia. Port):

Cv = 1.2

Maximum Pressure at Ports 1, 2, or 3: *125psi
(860 kPa)

Net Weight: 0.6 ~ 2.0 lbs. (0.3 ~ 0.9 kg)

150psi (1034 kPa) if a slight increase in operating force and pressure are acceptable.



www.cvs-controls.com

info@cvs-controls.com

Head Office

3900 101 Street
Edmonton, Alberta
T6E 0A5
Ph: 780 437 3055
Fax: 780 436 5461

Calgary Sales Office

3516 114 Ave SE
Calgary, Alberta
T2Z 3V6
Ph: 403 250 1416
Fax: 403 291 9487

FEATURES

BALANCED FORCE DESIGN: Pressure can be applied to any port

CENTER DEAD SPOT: Standard

ARRANGED FOR PANEL OR BRACKET MOUNTING

HYDRAULIC FLUID CONTROL

ACTUATOR CONTROL

PNEUMATIC PANEL SYSTEMS

SAFETY CONTROL SYSTEMS

The CVS Series 4057 3-Way Valve is commonly used in hydraulic or pneumatic control systems. Both manual and pressure operated automatic configurations are available. The maximum allowable pressure and temperature limits are suitable for a wide variety of applications. The 1/4" NPT valve ports allow high flow rates.

All CVS 4057 3-Way Valves are capable for use with the following processes: pneumatic, hydraulic, natural gas, L.P. gases, petroleum-base lubricants, and many other fluids.

Each valve is carefully assembled, tested, and inspected to ensure that high quality standards are met. Valves are made from precision cast and machined aluminum. Standard construction permits valve pressure to 125psi.

The CVS 4057 offers a unique and dynamic characteristic for the oil and gas industry. For instance, the 4057 model CP has a manual reset latch which will automatically drop out upon the introduction of pilot pressure, and allows the return stroke on loss of pilot pressure.

INSTALLATION

All connections on CVS 4057 Valves are made with 1/4" pipe thread fitting. Apply a quality thread sealant to pipe thread connections but do not permit it to enter the valve passage. Teflon thread sealing tape may be used but must be applied so that the threads of the tape do not enter the valve.

IMPORTANT

Avoid over tightening fittings on the valve port bosses as they may be cracked, especially when Teflon thread sealing tape is used.

MAINTENANCE

To check the seal rings, the valve spool can be removed. This is done on most versions by simply removing the end cap and pulling out the spool. Spools on panel mounted valves can be removed from in front of the panel without disconnecting any piping.

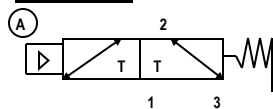
To replace O-rings, remove the spool, take off the old O-rings, thoroughly clean the grooves, and coat the grooves with Dow Corning No. 55 grease. Lightly coat the new rings with grease and install them. Remove excess grease and reinstall the piston.

When these valves are used in safety control systems, it is recommended that the system be checked monthly for proper functioning.

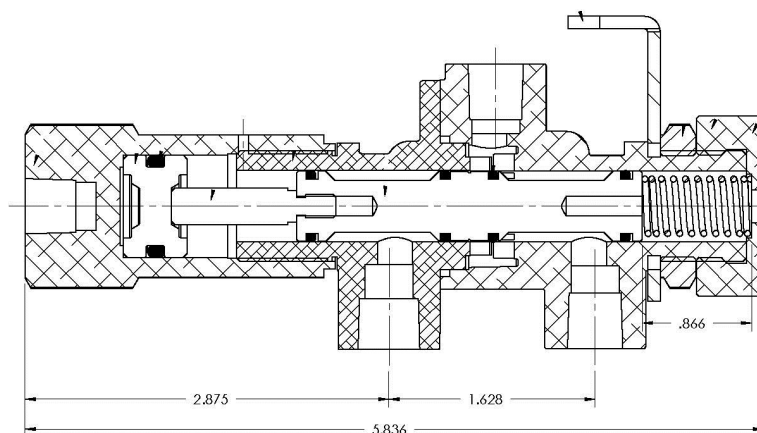
When communicating with CVS sales representative regarding operation of a control, always give the Model No. and Serial No. If ordering service parts always include the description, Part No., and quantity desired.

VALVE TYPE DESCRIPTION TABLE

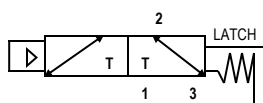
CVS CG



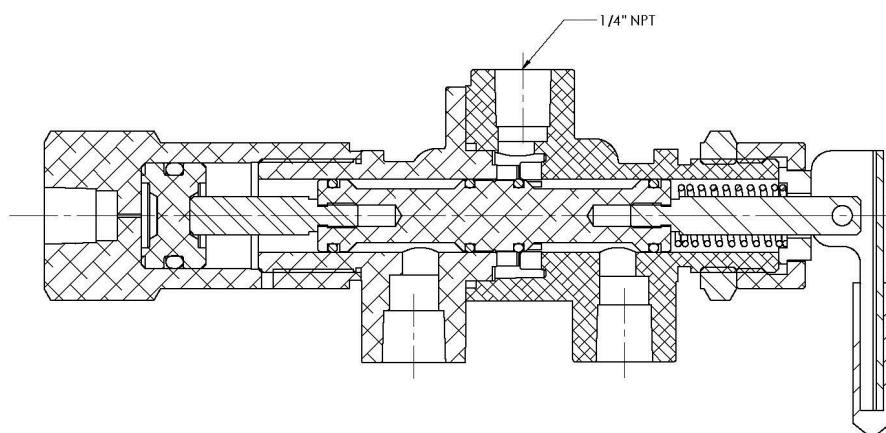
Pressure Operated, Spring Return
26 psi (1.8bar)



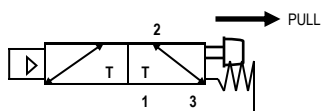
CVS CP



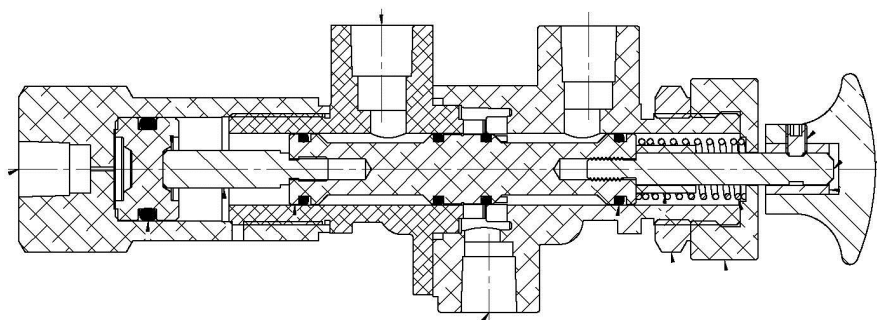
Pressure Operated Spring Return
when released, or Manual Latch
26 psi (1.8bar)



CVS CE



Pressure Operated Spring Return,
Or Manual Pull
26 psi (1.8bar) pressure, or
16lbs (7.27kg) force required.





www.cvs-controls.com
info@cvs-controls.com

Head Office

3900 - 101 Street
Edmonton, Alberta, Canada T6E 0A5
Tel: (780) 437-3055
Fax: (780) 436-5461

Calgary Sales Office

3516 114 Avenue SE
Calgary, Alberta, Canada T2Z 3V6
Tel: (403) 250-1416
Fax: (403) 291-9487