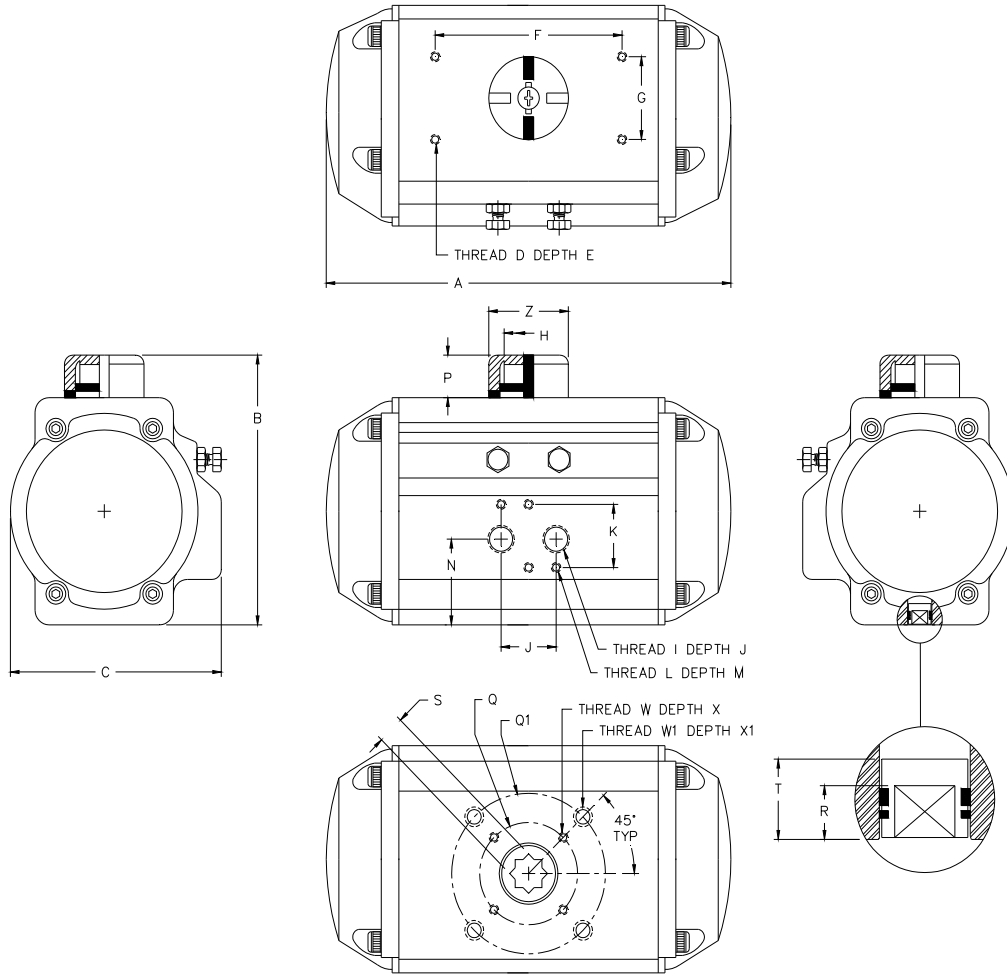


**DIMENSIONS: CVS50 - CVS265**



**TABLE 2 - External Dimensions CVS50 - CVS265 (INCHES)**

Dim.	CVS50	CVS63	CVS75	CVS88	CVS100	CVS125	CVS145	CVS160	CVS180	CVS200	CVS240	CVS265
A	5.53	6.24	8.29	9.74	10.57	13.58	16.08	17.22	19.17	21.38	24.45	26.96
B	3.50	4.13	4.80	5.31	5.79	7.36	8.15	8.90	10.65	11.61	13.72	14.96
C	2.78	3.27	3.72	4.19	4.84	5.96	6.75	7.36	8.03	8.74	10.31	12.97
D	M5	M5	M5	M5	M5	M5	M5	M5	M5	M5	M5	M5
E	0.31	0.31	0.31	0.31	0.31	0.31	0.31	0.31	0.31	0.31	0.31	0.31
F	3.15	3.15	3.15	3.15	3.15	3.15	3.15	3.15	5.12	5.12	5.12	5.12
G	1.18	1.18	1.18	1.18	1.18	1.18	1.18	1.18	1.18	1.18	1.18	1.18
H	0.43	0.43	0.58	0.58	0.58	0.83	1.06	1.06	1.26	1.26	1.42	1.42
I	1/4"	1/4"	1/4"	1/4"	1/4"	1/4"	1/4"	1/4"	1/4"	1/4"	3/8"	3/8"
J	0.94	0.94	0.94	0.94	0.94	0.94	0.94	0.94	0.94	0.94	1.57	1.57
K	1.26	1.26	1.26	1.26	1.26	1.26	1.26	1.26	1.26	1.26	1.77	1.77
L	M5	M5	M5	M5	M5	M5	M5	M5	M5	M5	M6	M6
M	0.31	0.31	0.31	0.31	0.31	0.31	0.31	0.31	0.31	0.31	0.39	0.39
N	1.04	1.22	1.20	1.32	1.48	1.81	1.87	2.11	2.28	2.46	3.09	6.52
P	0.79	0.79	0.79	0.79	0.79	1.18	1.18	1.18	1.97	1.97	1.97	1.97
R	0.47	0.63	0.71	0.71	0.87	1.06	1.26	1.34	1.54	1.57	1.93	2.72
S	0.43	0.55	0.67	0.67	0.87	1.06	1.06	1.06	1.42	1.42	1.81	1.81
T	0.49	0.65	0.77	0.77	0.93	1.12	1.32	1.40	1.61	1.65	2.03	2.81
Q	1.65	1.97	1.97	1.97	2.76	2.76	4.02	4.02	5.51	5.51	6.50	6.50
Q1	-	-	2.76	2.76	4.02	4.02	4.92	4.92	-	-	-	-
W	M5	M6	M6	M6	M8	M8	M10	M10	M16	M16	M20	M20
W1	-	-	M8	M8	M10	M10	M12	M12	-	-	-	-
X	0.35	0.35	0.35	0.35	0.47	0.47	0.59	0.59	0.94	0.94	1.18	1.18
X1	-	-	0.47	0.47	0.59	0.59	0.71	0.71	-	-	-	-
ISO5211	F04	F05	F05/F07	F05/F07	F07/ F10	F07/F10	F10/F12	F10/F12	F14	F14	F16	F16
Z	1.57	1.57	1.57	1.57	1.57	2.20	2.56	2.56	3.15	3.15	4.53	4.53

**DIMENSIONS: CVS300 - CVS1000**

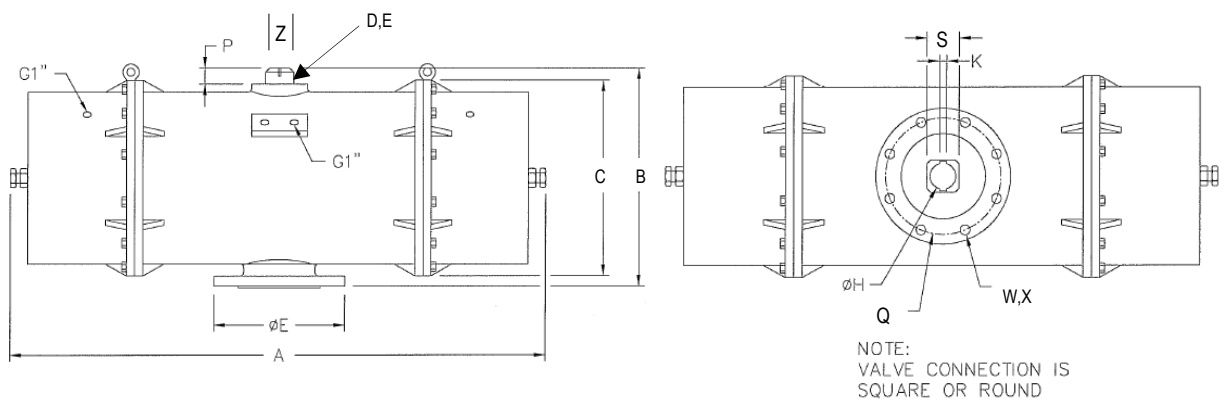


TABLE 2 - External Dimensions CVS300 - CVS1000 (INCHES)									
Dim.	CVS300	CVS350	CVS400	CVS500	CVS600	CVS700	CVS800	CVS900	CVS1000
IS05211	F16	F16	F25/F16	F30	F35	F40	F40	F48	F48
A	36.0	37.4	41.6	64.9	76.7	83.85	103.1	111.0	126.8
B	17.3	19.2	20.6	28.3	31.8	35.8	40.2	44.5	48.8
C	14.2	16.5	17.5	24.4	29.1	33.9	37.8	42.5	46.5
D	M5	M5	M5	M5	M5	M5	M5	M5	M5
E	0.31	0.31	0.31	0.31	0.31	0.31	0.31	0.31	0.31
F	5.11	5.11	5.11	5.11	5.11	5.11	5.11	5.11	5.11
G	1.18	1.18	1.18	1.18	1.18	1.18	1.18	1.18	1.18
H	0.16	0.15	0.15	0.15	0.15	0.15	0.15	0.15	0.15
I	1/2"	1/2"	1/2"	1"	1"	1"	1"	1"	1"
J	1.57	1.57	1.57	-	-	-	-	-	-
K	0.87	0.87	0.87	0.87	0.87	0.98	1.10	1.10	1.26
L	M6	M6	M6	-	-	-	-	-	-
M	0.47	0.47	0.47	-	-	-	-	-	-
N	-	-	-	-	-	-	-	-	-
P	1.96	1.96	1.96	1.96	1.96	1.96	1.96	1.96	1.96
Q	6.49	6.49	9.99	11.73	14.00	16.00	16.00	19.02	19.02
Q1	-	-	6.49	-	-	-	-	-	-
R	1.96	1.96	2.75	-	-	-	-	-	-
S	13.6	13.6	2.36	3.94	3.94	4.33	4.33	4.72	4.72
T	2.04	2.04	2.87	-	-	-	-	-	-
W	M20	M20	M16	M20	M30	M36	M36	M36	M36
W1	-	-	M20	-	-	-	-	-	-
X	1.18	1.18	0.94	1.18	-	-	-	-	-
X1	-	-	1.18	-	-	-	-	-	-
Z	4.52	4.52	4.52	4.52	4.52	4.52	4.52	4.52	4.52

## TECHNICAL DATA

TABLE 3 - Test Data										
Model	Piston Diameter (in)	Travel 1°/Turn	Air Volume OPEN (In <sup>3</sup> )	Air Volume CLOSED (In <sup>3</sup> )	OPEN Time (Seconds)		CLOSED Time (Seconds)		WEIGHT (Lbs)	
					SR	DA	SR	DA	SR	DA
CVS50	1.97	1/6 Turn	5.5	9.2	0.25	0.20	0.30	0.25	2.30	2.10
CVS63	2.48	1/6 Turn	9.8	15.9	0.30	0.25	0.35	0.30	3.70	3.50
CVS75	2.95	1/6 Turn	18.9	29.9	0.35	0.30	0.50	0.40	6.90	5.90
CVS88	3.46	1/5 Turn	31.1	47.6	0.50	0.40	0.60	0.50	9.70	8.40
CVS100	3.94	1/5 Turn	43.3	67.7	0.60	0.50	0.90	0.70	14.40	11.90
CVS125	4.92	1/5 Turn	94.0	142.8	1.10	0.90	1.40	1.20	27.80	22.50
CVS145	5.71	1/5 Turn	147.1	230.7	1.40	1.20	1.80	1.50	39.90	32.00
CVS160	6.30	1/4 Turn	191.6	300.2	1.70	1.50	2.10	1.80	52.90	43.70
CVS180	7.09	1/4 Turn	260.0	420.5	2.20	2.0	2.80	2.40	69.70	55.10
CVS200	7.87	1/4 Turn	362.5	577.3	3.20	2.70	4.00	3.50	99.40	78.30
CVS240	9.45	1/4 Turn	610.2	927.6	4.00	3.50	4.60	4.10	139.00	115.00
CVS265	10.43	1/4 Turn	884.8	1304.7	4.50	4.00	5.00	4.50	224.90	183.00

The above data was obtained using the following test conditions: Room Temperature, 90° Actuator Stroke, Solenoid Valve with a 5/32ø (4mm) Orifice and a flow capacity of 105gpm (400 L/min), Inside Pipe Diameter = 5/16ø (8mm), Clean Air, Supply Pressure (Air) = 79.8psi (5.5 bar), Actuator without external loading

**CAUTION:** When one or more of the above parameters are different, the moving time may vary slightly.